



## Charging stations and supplies

2021





# CrossPower offering by segments

for home			for work and public			for special moments
						
CRP- O Page 5-14	CRP- OH Page 5-14	CRP- WB Page 15-20	CRP- WB Page 15-20	CRP- P Page 21-27	CRP- PP Page 28-33	CRP- M Page 34-37



## CRP includes

### All chargers include

- ❖ Clear status light for easy use (red, green, blue).
- ❖ Compatible with most electric cars (mode 3/ type 2)

### All WB and P include

- ❖ Clear status light for easy use (red, green, blue).
- ❖ Compatible with most electric cars (mode 3/ type 2)
- ❖ Reliable user authentication with RFID / NFC card
- ❖ Built-in residual current monitoring module for the detection of DC-
  - ❖ residual current leaks (RCMB 6 mA)
- ❖ Device logs with date and time stamp, even if the backend connection is interrupted due to a power failure
- ❖ Vandalism indicator (tilt sensor)
- ❖ ISO 15118 ready hardware (pls refer to Product Info 5/2020, conditions apply)
- ❖ Possibility for local dynamic load management (DLM)
- ❖ Possibility for factory pre-commissioning



# ISO 15118 main features

- ❖ Clear status light for easy use (red, green, blue).
- ❖ Compatible with most electric cars (mode 3/type 2)
- ❖ ISO 15118: Road vehicles - The communication interface between vehicle and network is an international communication standard for electric vehicle charging
- ❖ ISO 15118 enables the integration of electric vehicles into the smart grid (also known as Vehicle-2-Grid, Vehicle-to-Grid, V2G) and allows the electric vehicle and the charging station to dynamically Exchange information on the basis of which an appropriate charging plan can be (re)created. ISO 15118 includes a feature called Plug & Charge, which uses various cryptographic mechanisms to secure communications and ensure the confidentiality, integrity, and authenticity of all exchanged data Translated with [www.DeepL.com/Translator](http://www.DeepL.com/Translator) (free version)
- ❖ ISO 15118's Plug & Charge feature also allows the electric vehicle to automatically identify itself to the charging station and gain authorized access to the energy needed to charge the battery In short, chargers with ISO 15118-capable hardware may in the future Automatic User Identification via the Charging Cable
- ❖ Prioritized load management by using real-time data from the EV battery.
- ❖ Enable vehicle-to-grid functions for vehicles with bidirectional on-board chargers



# CrossPower product family

Function	Description	
Mode2	Charging via household socket (1x16 A, 3.7 kW)	
Mode3	Standard charging method via certain Type 2 charging sockets (max 22 kW)	
MCB	Miniature power switch / overcurrent protection device. Protects car and charger from damage due to overcurrent or overload.	
RCD	Residual current circuit breaker (30 mA). Prevents danger to the user in the event of fault currents.	
RCD auto reset	Additional device for automatic reset of a tripped RCD	
RCMB	Residual current monitoring module for the detection of DC fault currents (6 mA)	
Mode3 Unlocking	Automatic unlocking of the charging cable in the event of a sudden power failure (only on the charging station side)	
Over-Voltage	Protection of an electrical installation against destructive surges caused by lightning, network polluting devices, etc.	
Modem	Modem for 2G / 3G mobile networks	3G/4G
ISO15118	Vehicle-to-grid communication interface (V2G & V2X)	

Term	Definition
EV	Electric Vehicle
Charge point	Charge point. One EV can be charged at a time
Charge station	May include one or more charge points. One or several EVs can be charged at the same time.
MIID Meter	Approved kWh meter (measuring device) for consumption measurement
RFID reader	Radio Frequency Identification: The customer can identify himself e.g. identification via RFID card and start recharging. begin.

★ available, only optional if necessary

\* subject to change without notice



# CrossPower Delivery periods (CPL)

- ❖ Delivery times are indicated in the CPL column. CPL is expressed in number of working days.
- ❖ A distinction is made between the following CPLs:

CPL	Delivery period
CPL5	5 Workdays
CPL20	20 Workdays
CPL30	30 Workdays
CPL99	project specific product, delivery time to be agreed separately

- ❖ CPL is calculated from the date of order confirmation.
- ❖ CPL does not include the transportation time from our factory to the destination. Here typically 3-5 days must be expected.
- ❖ Services such as custom branding or factory pre-commissioning affect CPL
- ❖ The time for customer branding must be coordinated separately
- ❖ Factory pre-commissioning requires additional 5 working days (CPL+5).



# CrossPower O

❖ 3,6 kW (16 A, 1 Phase)





# CrossPower O

## Simple Installation

- ❖ Intuitive app with Bluetooth for the installer to set and adjust the allowable charging current and for firmware updates
- ❖ Integrated residual current monitoring (RDC-DD) according to IEC61851-1
- ❖ Integrated residual current circuit breaker with overcurrent protection (RCBO, 30 mA), secured behind lockable flap
- ❖ Efficient wall mounting through modular design
- ❖ Also available for column mounting as an option, with adapter or full height column

**Intuitive  
Bluetooth-App!**



Bluetooth







# CrossPower O

## easy loading

- ❖ Compatible with most modern EV (Class 3/ Type 2)
- ❖ MID energy meter for visualization of consumed energy at the charging point, secured behind lockable flap





# CrossPower O

## simple control

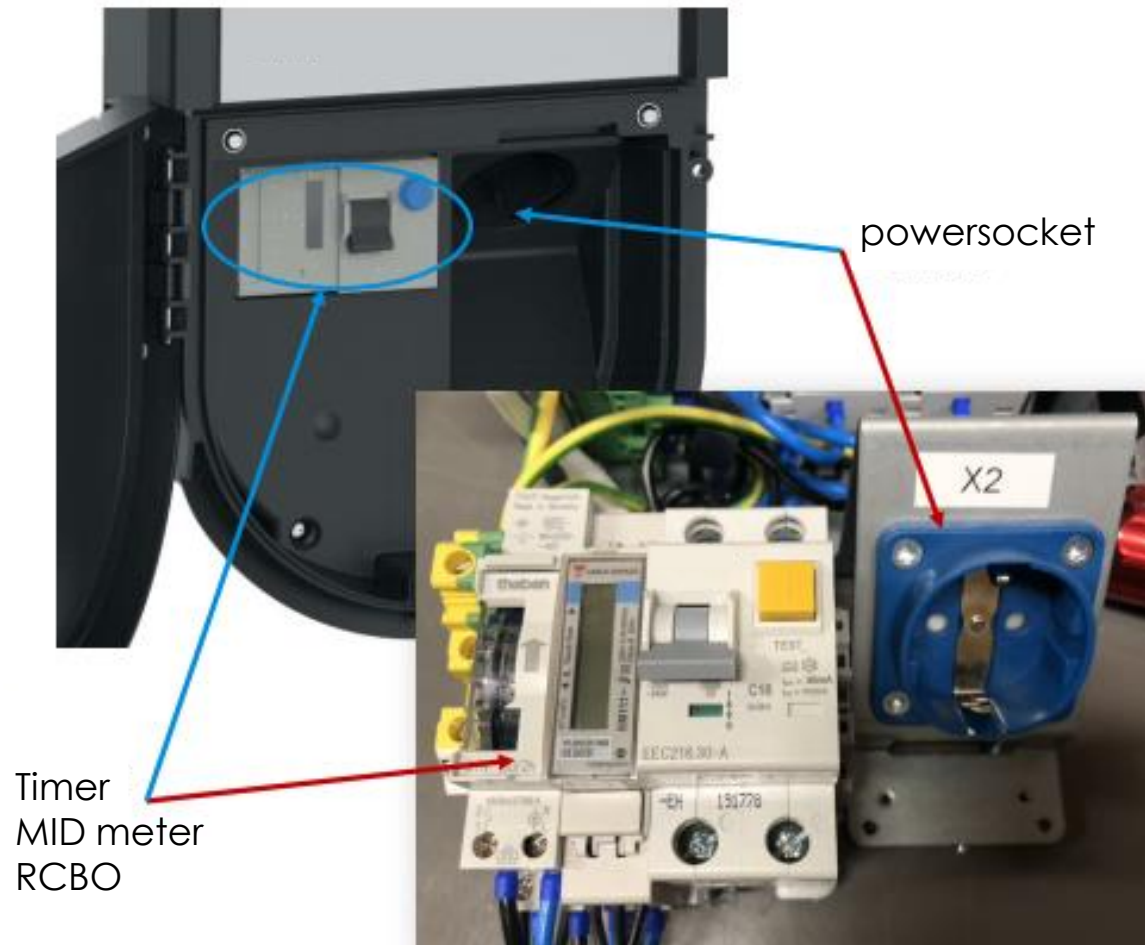
- ❖ Clear status indicators for easy operation (red, green, blue)
- ❖ Reliable user authorization via RFID/NFC card
- ❖ Prepared for cloud-based load management
- ❖ Ethernet connectivity
- ❖ Inclusion of charging points in EV Manager for fast, efficient management, operation, user and charging point control, and user-based consumption data display and billing





## Available plugs/cables

- ❖ Standard plug Typ 2
- ❖ An even more user-friendly version with powersocket available in addition to the Type2 socket (option for 16 A only)
- ❖ Fixed cable version available





# CrossPower O for private households

	Type2 power socket		Fixed cable
	CRP-161A2RM0C	CRP-161A2RMDC	CRP-161ACRM0C
3,6 kW (16 A, 1 Phase)	★		★
Type2 power socket (without cover)	★	★	
Fixed cable, 5 m, Type2 plug		★	★
Blank plug	★		
powersocket with mechanical timer			
IP44, IK10			★
Installer Bluetooth App	★	★	★
Bluetooth app for drivers	★	★	★
DC differential current monitoring (RDCDD)			
MID meter	★	★	★
MCB / RCD Typ A (RCBO)	★	★	★
Ready for RFID user identification	★	★	★
LAN with RJ45 connection	★	★	★
Locking flap	★	★	★
Wall mounting	★	★	★
Stand adapter	★	★	★
Pillar	🚗	🚗	🚗
Backend management with manager	🚗	🚗	🚗
Ohne Berichtsfunktion	CRP-161A2RM0	CRP-161A2RMD	CRP-161ACRM0



# CrossPower O

## Always included:

### Easy charging

- ❖ Fixed cable with type2 plug for easy handling, plug and play
- ❖ Dummy plug for neat storage of the cable when not in use

### Easy control

- ❖ Quick change of maximum current via intuitive Bluetooth app





## CrossPower O





### Also included optionally:

- ❖ Integrated residual-current-operated circuit breaker with overcurrent protection (RCBO, 30 mA), secured by back-lockable flap
- ❖ as an option also available for pole mounting, with adapter or full-height pole
- ❖ Not available for private charging stations
- ❖ Cloud connectivity
- ❖ Prepared for dynamic load management
- ❖ RFID identification capability





# CrossPower OH for family homes

	CRP-161HC000	CRP-161HCR00
3,6 kW (16 A, 1 Phase)	★	
Fixed cable, 5 m, Type2 plug		★
Plug holder	★	★
IP44, IK10	★	★
Installer Bluetooth App	★	★
Bluetooth app for drivers	★	★
DC differential current monitoring (RDCDD)	★	★
Wall mounting	★	★
MCB / RCD Typ A (RCBO)	★	★
Flap, to open with a coin		
Adapter for pillar		
Pillar and adapter		



# CrossPower OH

## Some technical specifications

### Structure

- ❖ Polycarbonate casing(PC)
- ❖ IP44
- ❖ IK10
- ❖ Operating temperature
- ❖ -40 to +50 °C

### Installation

- ❖ Standard wall mounting
- ❖ 1-phase power supply
- ❖ L, N, PE Cu 2,5–10 mm<sup>2</sup>
- ❖ App for setting the operating voltage 6 - 16 A / 32 A
- ❖ IT network yet to be tested

### Features

- ❖ Permanent cable, 5 m, with Type2 plug
- ❖ Two versions with different ampere rating 16 A and 32 A, 1 phase
- ❖ Operating voltage adjustable from 6 A - 16 A/32 A
- ❖ Integrated sensor module for DC-sensitive residual current monitoring (RDC-DD)
- ❖ Optionally available MCB / RCD type A (RCBO, 30 mA)





# CrossPower WB

The CRP-WB is a modular solution for charging one or two electric vehicles. Its compact and user-friendly design makes it the perfect choice for daily charging in **private** or **semi-public** locations.



## Safe and easy to use

- ❖ Safety features such as DC fault current sensor and
- ❖ inner temperature monitoring, etc.
- ❖ Simple and secure user identification
- ❖ Plug & Charge mode (charging without identification)



## One or two charge points

- ❖ Two charge points provides the ability to charge two electric vehicles at the same time.

## Simple and fast installation

- ❖ Different installation variants available
- ❖ Immediate operational readiness



# CrossPower WB 1 charge point

## Standard features - A version

- ❖ Clear status displays (red, green, blue)
- ❖ Good visibility of the charge station due to ambient lighting
- ❖ Mode 3 not included

## Additional features - B version

- ❖ Automatic unlocking of the charging cable in the event of a sudden power failure (charging station side only)
- ❖ ISO15118 hardware ready

Function B	Standard	MID	Integrated RCD+MID
LAN Connection	CRP-WB100BLB	CRP-WB100BLBC	CRP-WBBLBC (3p)

Function A	Standard	Integrated RCD 1p	Integrated RCD 3p
LAN Connection	CRP-WB100ALB	CRP-WB101ALB	CRP-WB103ALB
Mobile Connection	CRP-WB100AWB	CRP-WB101AWB	CRP-WB103AWB

## Notes

- ❖ Charging stations with modem do not include a cellular phone contract LAN connection possible at marked charging stations.
- ❖ Chargers marked V2G are prepared on the hardware side for vehicle-to-grid communication according to ISO15118
- ❖ An additional external RCD type A is required to protect the user

## IMPORTANT!

Each CRP-WB requires one of the mounting accessory variants. Always order at the same time!



# CrossPower WB 2 charge points

## Standard features - A version

- ❖ Clear status displays (red, green, blue)
- ❖ Good visibility of the charging station due to ambient lighting

## Additional features - B version

- ❖ Automatic unlocking of the charging cable in the event of a sudden power failure (only on the charging station side)

## Note

- ❖ LAN connection possible for marked charging stations
- ❖ Chargers marked V2G + V2X are prepared on the hardware side for vehicle-to-grid communication according to ISO15118
- ❖ An additional external RCD type A is required to protect the user
- ❖ Possibility of factory pre-commissioning

Function A	Standard	Standard with ISO 15118
LAN Connection		CRP-WB200ALB
Mobile Connection	CRP-WB200A4	

Function B	Standard	Standard with ISO15118	MID	ISO15118	MID+ISO15118
LAN Connection		CRP-WB200BLB			CRP-WB203EBLBC
Mobile Connection	CRP-WB200B4		CRP-WB203EB4C	CRP-WB200B4B	CRP-WB203EB4BC
Type 2 plug with flap	CRP-WB200B4S	CRP-200BLBS			



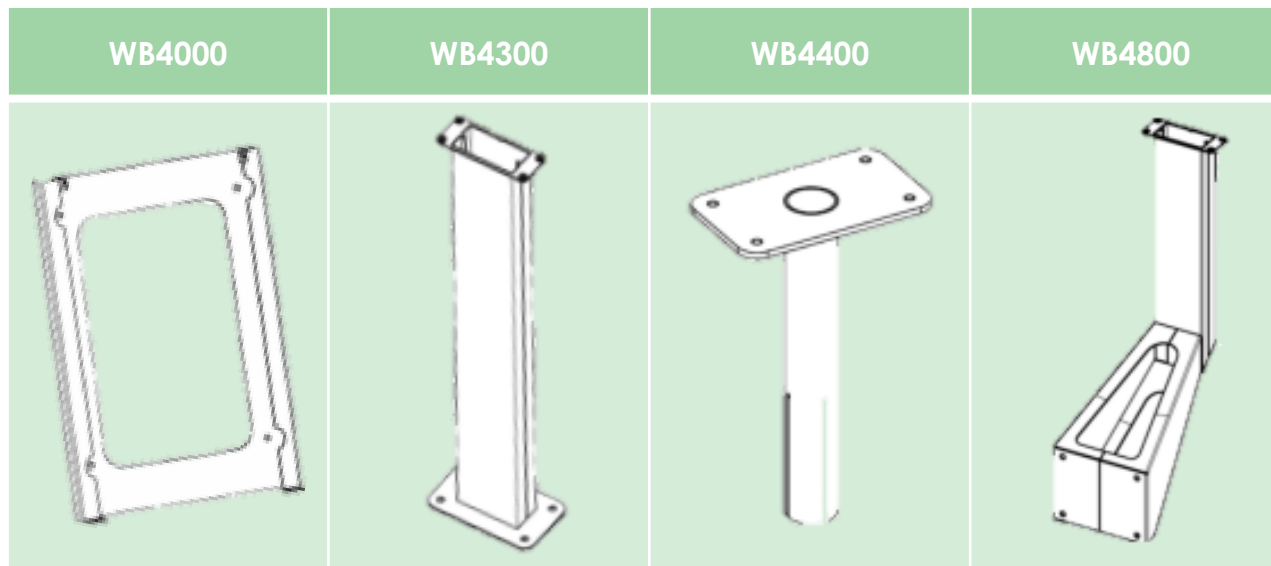
# CrossPower WB Accessories



**IMPORTANT!**

Each CRP WB requires one of the mounting accessory variants. Always order at the same time!

Accessories	Assembly	Description	Article number	CRL
		Wall mounting plate	WB4000	5
		Floor mounting accessories (pier)	WB4300	5
		Floor mounting accessories (pier)	WB4302	5
		Base adapter 60 mm to EVTL43.00	WB4400	5
		Wall mount , extendable	WB4800	30





# CrossPower WB technical data



Charge points	1 or 2 Mode 3 / Type 2 charge points 1 or 2 Mode 3 / Type 1 or Type 2 cables Option: wired software (cable not included)
Rated voltage	1-ph/3-ph, 230/400VAC, 50Hz
Loading power	Max. 22kW/T2 charge point Freely configurable between 6A and 32A
Safety class	IP54
Impact resistance level	IK10
Safety features	Residual current monitoring module for the detection of DC residual currents (RCMB 6mA)
Control & Communication	Standalone/Online 2G/3G, LAN OCPP 1.5 / 1.6 IEC15118 Master/Slave functionality
Environmental temperature	-30°C to +50°C
User interface	User authentication with RFID (ISO/IEC 14443A/B ISO/IEC 15693)/ NFC card 3-color LED status indicator (green, blue, red)
Mounting/Installation	Wall or floor mounting
Standard / Requirements	CE, IEC 61851-1



# CrossPower P

CRP-P is the low-maintenance and easy-to-use charging station for demanding environments. Ideal for operational charging or semi-public spaces.



## High reliability

- ❖ High reliability due to robust metal housing and high-quality industrial components

## Fast and easy installation

- ❖ Easy installation
- ❖ Immediate operational readiness
- ❖ Models with ground and wall mounting

## Vehicle-to-Grid-support

- ❖ Optional support of vehicle-to-grid communication services as per ISO15118

## Secure and easy to use

- ❖ Safety features such as DC fault current sensor and internal temperature monitoring, etc.
- ❖ Simple and secure user identification



# CrossPower P 1 charge point

## Standard features - A version

- ❖ Clear status indicators (red, green, blue)
- ❖ Remote RCD monitoring for high availability of the charging station
- ❖ Remotely monitored RCD protection slater to improve the charging time of the charger
- ❖ Good visibility of the charging station due to ambient lighting
- ❖ Main circuit breaker (MCB)

## Additional features - B version

- ❖ Automatic unlocking of the charging cable in the event of a sudden power failure (only on the charging station side)
- ❖ Automatic remote reset motor for the RCD \*

## Notes

- ❖ Charging stations with modem do not include a mobile phone contract
- ❖ LAN connection possible for marked charging stations
- ❖ Charging stations marked V2X are prepared on the hardware side (V2G&V2X) for vehicle-to-grid communication according to ISO15118
- ❖ Standard color "traffic white" RAL9016S

Function A	Standard with ISO 15118	Function B	Standard	MID
LAN Connection	CRP-P100WALB	Mobile Connection	CRP-P100WB4	CRP-P100WB4C



# CrossPower P 2 charge points

## Standard features - A version

- ❖ Clear status indicators (red, green, blue)
- ❖ Remote RCD monitoring for high availability of the charging station
- ❖ Remotely monitored RCD protection slater to improve the charging time of the charger
- ❖ Good visibility of the charging station due to ambient lighting
- ❖ Main circuit breaker (MCB)

## Additional features - B version

- ❖ Automatic unlocking of the charging cable in the event of a sudden power failure (only on the charging station side)
- ❖ Automatic remote reset motor for the RCD \*

\* Type 2 plug with flap and French E2 power socket

Function A	Standard	Standard with ISO15118	Special	Special with ISO15118
LAN Verbindung		CRP-P200WALB		CRP-P200WALBE2S*
Mobile Verbindung	CRP-P200WA4		CRP-P200WA4E2S*	

Function B	Standard	Standard with ISO15118	MID	ISO15118	Special
LAN Verbindung		CRP-P200WBLB	CRP-P200WBLBC		CRP-P200WC4LBC
Mobile Verbindung	CRP-P200WB4		CRP-P200WB4C		
			CRP-P200WB4CS*		
			CRP-PWB4BCD**		

## Notes

- ❖ Charging stations with modem do not include a mobile phone contract (see Services)
- ❖ LAN connection possible for marked charging stations
- ❖ Charging stations marked V2X are prepared on the hardware side (V2G&V2X) for vehicle-to-grid communication according to ISO15118
- ❖ Standard color "Traffic white" RAL9016S

\* Type 2 plug with flap  
 \*\* Overvoltage protection





# CrossPower P technical data



Charge points	1 or 2 Mode 3 / Type 2 charging points with locking flap Option: wired software possible (cable is not included)
Rated voltage	1-ph/3-ph, 230/400VAC, 50Hz
Loading power	Max. 22kW/T2 charge point Freely configurable between 6A and 32A
Safety class	IP54
Impact resistance level	IK10
Safety features	MCB RCD TYPA , in combination with sensor for DC sensitive residual current monitoring ( DC fault current of > 6mA)
Control & Communication	Standalone/Online 2G/3G, LAN OCPP 1.5 / 1.6 IEC15118 Master/Slave functionality
Environmental temperature	-30°C to +50°C
User interface	User authentication with RFID (ISO/IEC 14443A/B ISO/IEC 15693)/ NFC card 3-colorLED status indicator (green, blue, red)
Mounting/Installation	Floor or wall mounting
Standard /Requirements	CE, IEC 61851-1



# CrossPower P Options & Accessories

- ❖ Standard color "Traffic white" RAL9016S
- ❖ Built-in RCD type A
- ❖ Remotely monitored RCD to improve charger charging time
- ❖ Main circuit breaker (MCB)
- ❖ Mode 3 unlocking in case of power failure / main switch (MCB)
- ❖ Automatic and remote RCD reset with a motor (not allowed in CH, D, FR, UK)

Function A	MID	Special
Mobile Connection	CRP-P300WB4C	CRP-P300WB4CS*


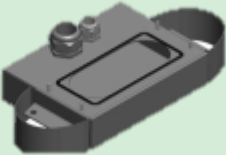

\*) Type 2 plug with flap



CRP P Accessories	Mounting	Description	Article number	CRL
		Concrete anchoring (only in conjunction with CRP3200)	P2800	5
Wall mounting frame	P3100	5		
Plate for floor mounting (cable routing from below)	P3200	5		
Plate for floor mounting (cable routing from above)	P3400	5		
Foot adapter 150mm	P3600	5		
Floor mounting plate (P300)	P3500	40		



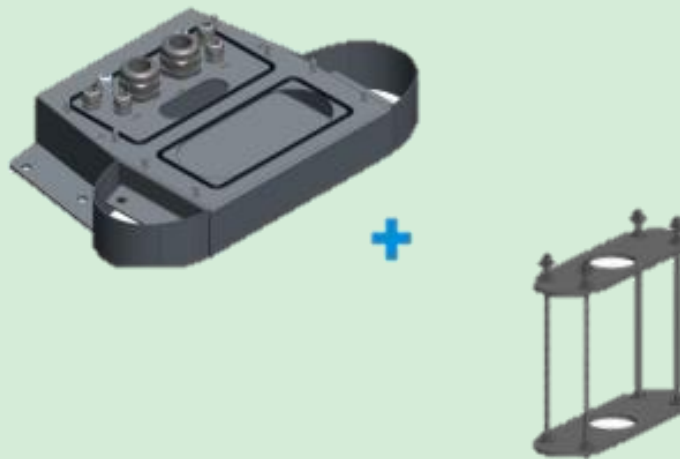
# CrossPower Which mounting accessories are suitable for your project?

<p>Ground mounting on new Concrete foundation</p>		<p>P3200 Plate for Ground mounting (cable routing from below) P2800 Concrete anchorage Optional : P3600 Foot adapter 150mm</p>
<p>Ground mounting on existing Concrete foundation</p>		<p>P3400 Ground plate for floor mounting (cable routing from above)</p>
<p>Wall mount</p>		<p>P3100 Frame for wall mounting</p>



# CrossPower Which mounting accessories are suitable for your project?

Ground mounting on  
new  
Concrete foundation



Ground mounting on  
existing  
Concrete foundation

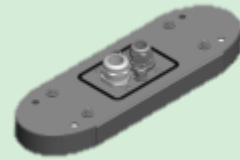




# CrossPower PP

Ground mounting on  
new  
Concrete foundation

PP3200  
Ground mounting  
Cable routing  
from below



PP2800  
Concrete anchorage



Please order  
suitable  
anchor bolts  
separately  
from a  
local supplier

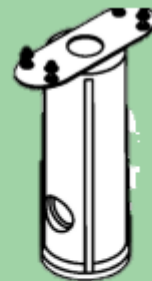
PP3400  
Floor mounting Cable routing  
from above



Ground mounting on  
existing  
Concrete foundation



PP3200



PP3600  
150 mm Foot  
adapter



Wall  
Mounting



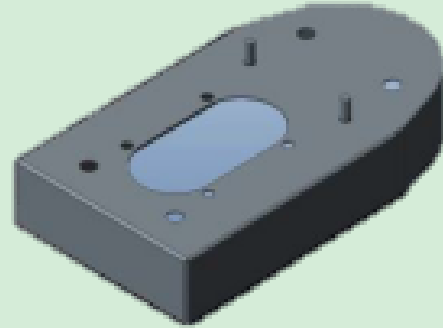
PP3100  
Wall mounting set  
incl. mounting rail  
and plate



# CrossPower PP Which mounting accessories are suitable for your project?

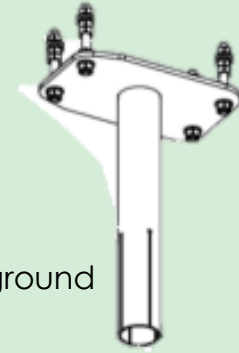
Ground mounting on  
Concrete

PP4200  
Plate for ground mounting



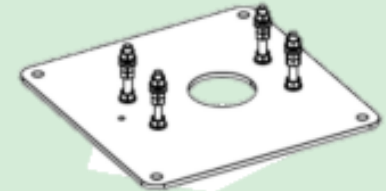
Ground mounting on  
Ground mounting frame

PP4200  
Plate for ground  
mounting



or

PP4700  
Ground mounting  
frame





# CrossPower M

The CRP M solution is an innovative combination of two charging points for electric vehicles with an information and advertising display. The use of the screen as advertising space enables an economic business model for charging infrastructure.



## Very imagestrong

- ❖ Stunning display technology combined with high-quality charging technology
- ❖ Designed for the toughest outdoor conditions
- ❖ Additional safety due to laminated anti-reflective front glass

## Creates attention

- ❖ Excellent visibility from all viewpoints
- ❖ Suitable for text, photos, graphics and film
- ❖ Smooth integration with media content management systems



# CrossPower M Characteristics



## Extensive features

- ❖ Clear status indicators for easy operation (red, green, blue)
- ❖ Reliable user authentication with RFID/NFC card
- ❖ 2 charging sockets (mode 3/ type 2) | max. 2x 22 kW
- ❖ Integrated type A residual current circuit breaker
- ❖ Integrated residual current monitoring module for the detection of DC residual currents (RCMB 6 mA)
- ❖ Remotely monitored ground fault circuit interrupter (RCD) to improve charge point uptime
- ❖ Main circuit breaker (MCB)
- ❖ 3G/4G cellular connectivity
- ❖ IEC/ISO 15118 vehicle-to-grid communication (V2G & V2X)
- ❖ Device logs with date and time stamp even if the backend connection is interrupted due to a power failure.
- ❖ Vandalism display
- ❖ eHz measurement interface
- ❖ Automatic remote RCD reset with motor\*.
- ❖ Automatic release of charging cable in case of power failure
- ❖ Dynamic Load Management (DLM)
- ❖ Screen adjusts to lighting conditions
- ❖ More safety due to laminated, anti-reflective front glass
- ❖ Smooth integration with CRP content management systems
- ❖ Standard color: White aluminum - RAL9006

### Note

Mobile data subscription not included

LAN connection as an option

Network connection components not included

Subject to change without notice \*)  
not allowed in CH, DK, FR, UK





# CrossPower M



## Comment

- ❖ Mobile data subscription is not included
- ❖ LAN - connection as option
- ❖ Possibility of factory pre-commissioning

Beschreibung	Optionen	Artikelnummer
M Charger + 46" digital screen	n/a	M46A
M Charger + 46" digital screen	Industrial PC (Linux OS) + WLAN Modem	M46B
M Charger + 46" digital screen	Industrial PC (Linux OS) + 3G/4G Modem	M46C
M Charger + 46" digital screen	Industrial PC (Windows 7) + WLAN Modem	M46D
M Charger + 46" digital screen	Industrial PC (Windows 7) + 3G/4G Modem	M46E
M Charger + 55" digital screen	n/a	M55A
M Charger + 55" digital screen	Industrial PC (Linux OS) + WLAN Modem	M55B
M Charger + 55" digital screen	Industrial PC (Linux OS) + 3G/4G Modem	M55C
M Charger + 55" digital screen	Industrial PC (Windows 7) + WLAN Modem	M55D
M Charger + 55" digital screen	Industrial PC (Windows 7) + 3G/4G Modem	M55E



**Please inquire delivery times**



# CrossPower M



Dimensions & Format	46" (1171 x 2158 x 230mm)   55" (1291 x 2185 x 257 mm) mit 2 Ladepunkten
Protection classes	IP54/ TFT Monitor IP65
Impact resistance level	IK10
Environmental temperature	35° to +55°C
Humidity	90 % (not condensing)
Material	powder coated stainless steel, aluminum and steel construction
Approval / Labeling	CE, RoHS
Access control	User authentication with RFID (ISO/IEC 14443A/B ISO/IEC 15693) or NFC card
Charging power	Max 22 kW / T2 charge point The charging power can be configured via software from 1.8 to 22kw per charge point
Charge port on EV	1 or 2 Mode 3 / Type 2 Option: wired software possible (cable is not included)
Charge status display	3 colored LED status display (green, blue, rot)
Voltage measurement	MID- meter
Rated voltage	3 x 63 A or 2 x 3 x32 A, 230/400VAC, 50 Hz
Ports	L1, L2, L3, N, PE, Cu 2.5 - 50 mm <sup>2</sup> , Al 6-50mm <sup>2</sup>
Communication with back-end	3G, 4G, Ethernet, OCPP 1.5/ 1.6
Standards	IEC 61851-1, EN61439-1, EN61439-3 // CE, EN55022, EN50121-4, IEC60950
Display type	TFT
Display size	46" 16/9 Diagonal, viewing angle: 178°, active area 1018 x 573 mm 55" 16/9 Diagonal, viewing angle: 178°, active area 1210 x 680 mm
Resolution	Full HD 1920 x 1080 pixel
Luminosity and contrast	2500nits(cd/m <sup>2</sup> ), 5000:1
Front screen	Laminated anti-reflective glass
Media player	TFT-Monitor-Steuerung: Q7 Intel BayTrail E3845 Quadcore 1,91GHz, 4GB RAM, Dual Flash 8 GB, optionale DVI-Oberfläche
Display connectivity	Ethernet, 2G/3G
Power supply/consumption	Charging station 230 VAC, 50 Hz, 60W TFT Display 230 VAC, 50 Hz, 520W (max) including 200W heater



# CrossPower Manager für Single, Essential und Dynamic Plan

## User management

- ❖ Add new authorized users
- ❖ Manage existing authorized users
  - ❖ Include new RFID tags for authorized users
  - ❖ Remove RFID tags or authorized users
- ❖ Authorize users for specific charging stations

## Consumption

- ❖ Generate consumption data with a specific time frame
  - ❖ Charging amount / RFID
  - ❖ Charging events / charging station(s)
  - ❖ Charging amount / charging station(s)
- ❖ Note! kWh consumption data can be displayed if a dial gauge is available.

## Charging station status

- ❖ Status information
  - ❖ Available (online & connected)
  - ❖ Not available (offline & not connected)
  - ❖ Charging
  - ❖ Stopped (charging completed, but cable still connected)
  - ❖ Error (generic)

## Remote monitoring

- ❖ Basic remote monitoring
  - ❖ Start & stop the charging process
  - ❖ Disconnect charging cable
  - ❖ Firmware update (manual)
  - ❖ Software reset
  - ❖ Hardware reset Switch off/on)



General terms and conditions  
Terms of payment: by agreement  
All prices are exclusive of VAT.  
Product prices and specifications are subject to change without notice.  
Status: 02/2021  
<https://www.crosspower.at/home/kontakt/agb/>

